



AMI Provisioning *Product Overview*

**UEFI Plugfest Taipei
October 2010**

Disclaimer

- This publication contains proprietary information which is protected by copyright. No part of this publication may be reproduced, transcribed, stored in a retrieval system, translated into any language or computer language, or transmitted in any form whatsoever without the prior written consent of the publisher, American Megatrends, Inc. American Megatrends, Inc. retains the right to update, change, modify this publication at any time, without notice.

For Additional Information

- Call American Megatrends, Inc. at 1-800-828-9264 for additional information.

Limitations of Liability

- In no event shall American Megatrends be held liable for any loss, expenses, or damages of any kind whatsoever, whether direct, indirect, incidental, or consequential, arising from the design or use of this product or the support materials provided with the product.

Limited Warranty

- No warranties are made, either express or implied, with regard to the contents of this work, its merchantability, or fitness for a particular use. American Megatrends assumes no responsibility for errors and omissions or for the uses made of the material contained herein or reader decisions based on such use.

Trademark and Copyright Acknowledgments

- Copyright ©2010 American Megatrends, Inc. All Rights Reserved.
- American Megatrends, Inc., 5555 Oakbrook Parkway, Suite 200, Norcross, GA 30093
- All product names used in this publication are for identification purposes only and are trademarks of their respective Companies.

Future Possibility

A Magic Innovation



Extending Beyond BIOS & UEFI

MegaRAC_SP
Service Processor
&
Firmware Solutions
(IPMI & I-KVM &
SMASH & WSMAN)

XMS
Manageability
Solutions
(Sx, Hx, Vx, Px, Cx,
Tx)

MG_90XX
Backplane
Controller
(SGPIO & SES-2 &
IBPI & IPMI)

NTG
Advanced
BIOS/Mobile
Solutions
(Multimedia,
smart phone,
virtualization)

HTG
Advanced USB &
ASIC devices
(AMI DebugRx, test
automation, power
management)

StorTrends
Storage Solutions
(NAS,I-SCSI,
SafeTrends)

Aptio & AMIBIOS8
(UEFI & Legacy)

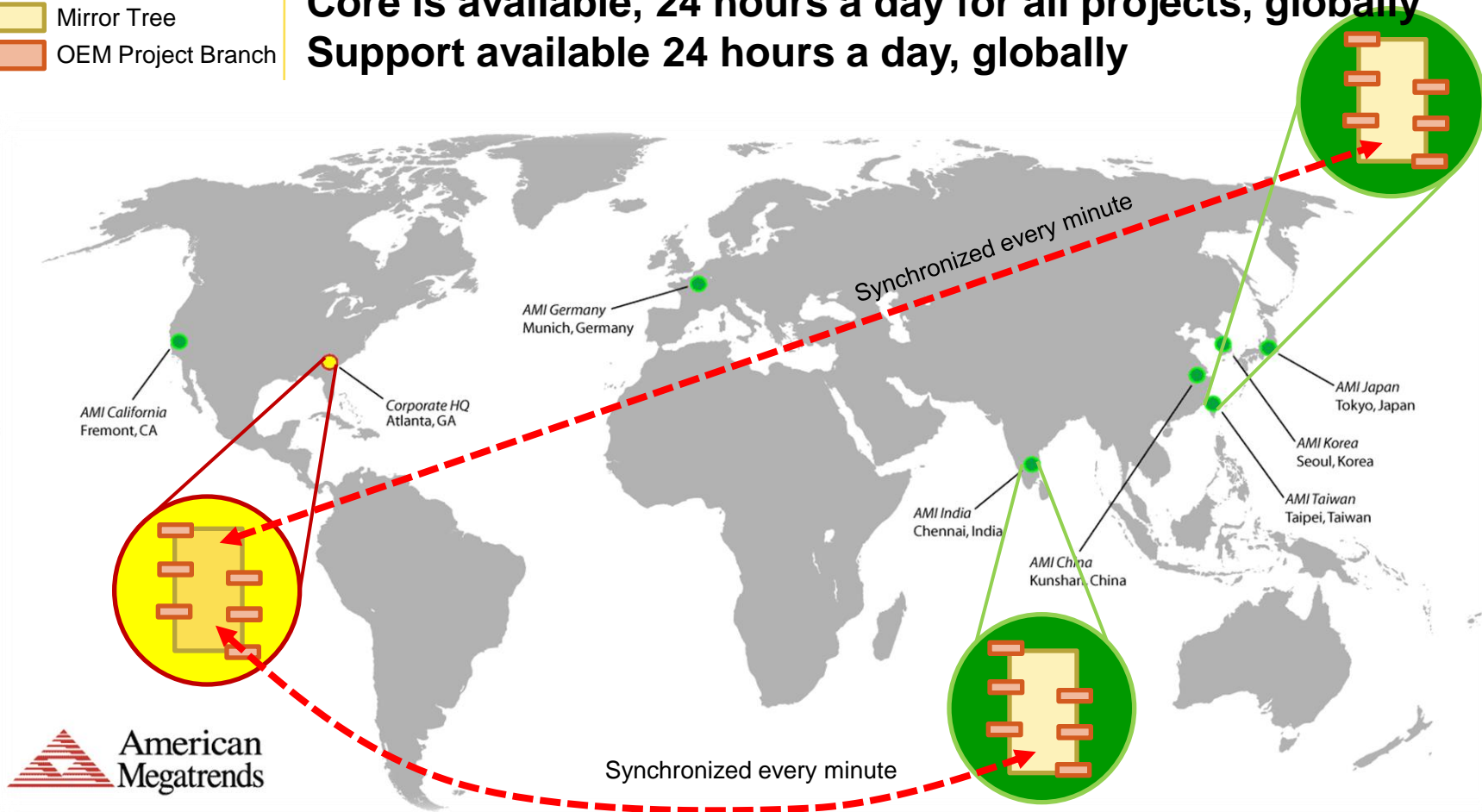
AMIDiag
(Diagnostic tools
for DOS, Windows,
UEFI & embedded
in BIOS ROM)



Global Support Infrastructure

- Core Tree
- Mirror Tree
- OEM Project Branch

Core is available, 24 hours a day for all projects, globally
Support available 24 hours a day, globally



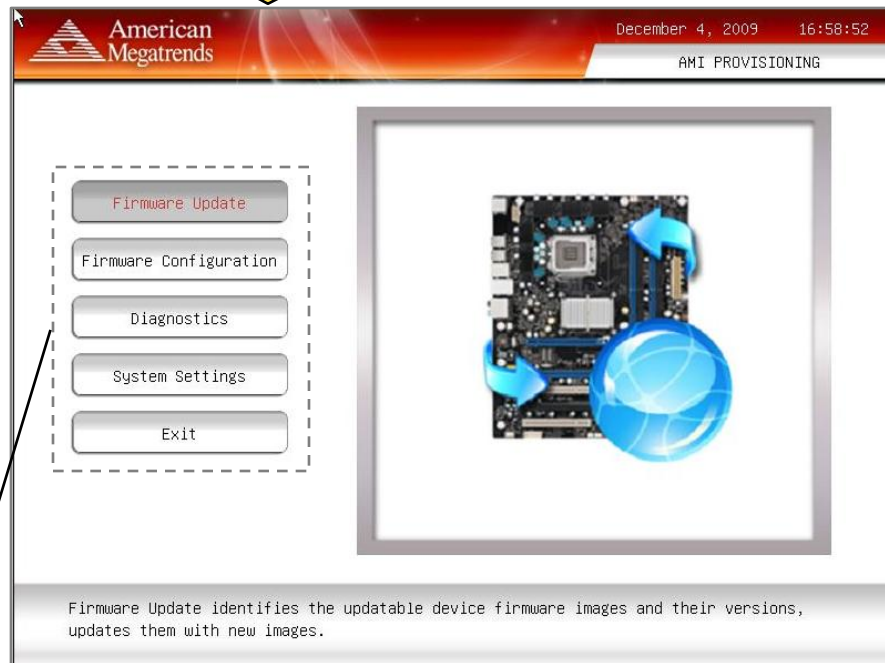
Moving “beyond BIOS” with UEFI

- **AMI’s progress with Aptio shows how UEFI creates more flexible firmware**
 - ❖ Standards-based development in C
 - ❖ eModule component architecture
 - ❖ Enhanced debug capabilities
- **The experience continues with AMI Provisioning**
 - ❖ Add graphical pre-boot applications
 - ❖ Create a unique platform value-add that doesn’t rely on any specific operating system



AMI Provisioning

Graphical user interface, based on the AMI Graphical Execution Environment (GEE) for UEFI



Choose from applications developed by AMI, or develop custom applications using AMI Provisioning libraries

Graphical themes, which can be customized for a unique look and feel

Designed to work on more than Aptio ... use AMI Provisioning with any UEFI 2.x implementation



AMI Provisioning: Usage Models

- **Retire the “Factory DVD”**
 - ❖ Launch UEFI pre-boot applications from flash memory or a hidden disk partition
- **Reduce Unnecessary RMA Exchanges**
 - ❖ Run tests without booting to the OS
 - ❖ Embed diagnostics and recovery utilities
 - ❖ Create OEM specific applications that always travel with the platform
- **Manage Platform Firmware**
 - ❖ Update any platform firmware, not just BIOS
 - IPMI BMC, RAID, SATA/SCSI, ...
 - ❖ GUI & web-based firmware updates without booting to the operating system



AMI Provisioning

- **Framework for deploying graphical UEFI pre-boot applications**
- **Runs from UEFI pre-boot or UEFI Shell**
- **Built on AMI Graphical Execution Environment (GEE) technology**
- **Major features:**
 - ❖ **Firmware Configuration, based on AMI GSE**
 - ❖ **Firmware Update**
 - ❖ **Integrate tests from AMIDdiag for UEFI**

Highlights ...

- **UEFI 2.x (IA32 & x64)**
- **Customize look & feel**
- **Multilanguage support**
- **Context sensitive help**
- **Network support**
 - ❖ **CIFS / NFS / FTP / HTTP**
- **Verify digital signatures to avoid using “tampered” updates**
- **Firmware Update**
 - ❖ **Update all firmware components**
 - ❖ **Update from local file, network share, HTTP or FTP**
 - ❖ **Verify the authenticity and compatibility of firmware image**

Utilities & Diagnostics under UEFI

- AMI uses the power of UEFI as an application space
 - ❖ Pre-Boot Diagnostics
 - ❖ Firmware Update
 - ❖ Support Applications
- Easily expanded ...
 - ❖ System recovery & rescue applications
 - ❖ OS installation wizard
 - ❖ OEM & 3rd party apps



AMIDiag for UEFI



Full testing without an OS install

- Menu driven user interface with scripting & batch modes
- Condensed scripted, scripted, and batch mode testing
- Test progress reporting
- Create & view error log files
- Add 3rd party tests developed with the AMIDiag for UEFI SDK
- Perfect for burn-in and system integration testing

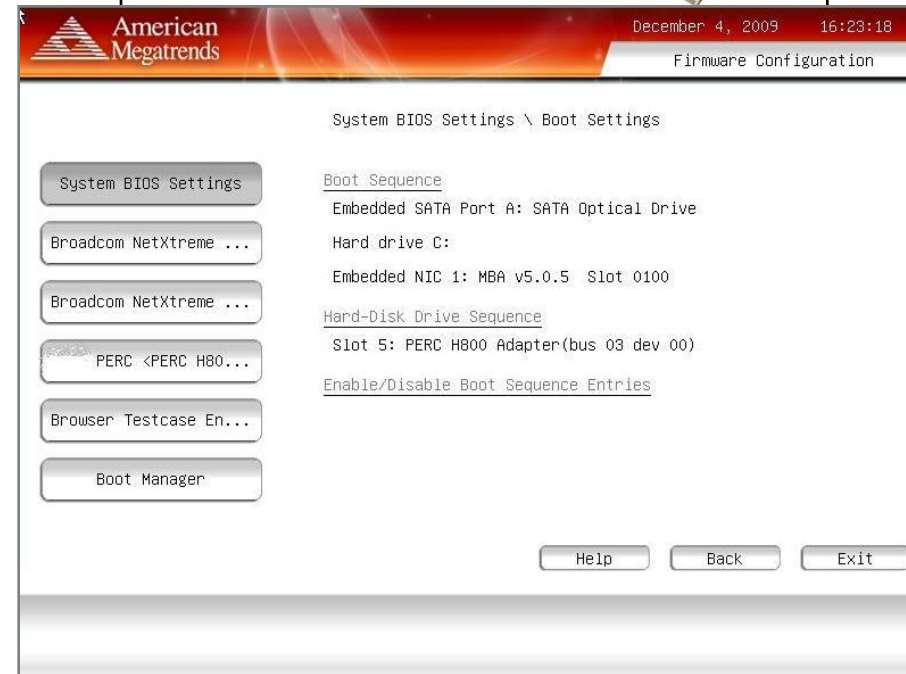
Upcoming Features

- Manufacturing configuration, managed via local network
- Graphical interface (optional)
- UEFI Setup/HII Interfaces



AMI Graphical Setup Environment (GSE)

- Provide a graphical interface for Aptio
- OEMs customize the drivers, applications and images in GSE
- Customization of images, background and page layouts
- Add GSE to Aptio 4.x projects as a more user-friendly setup



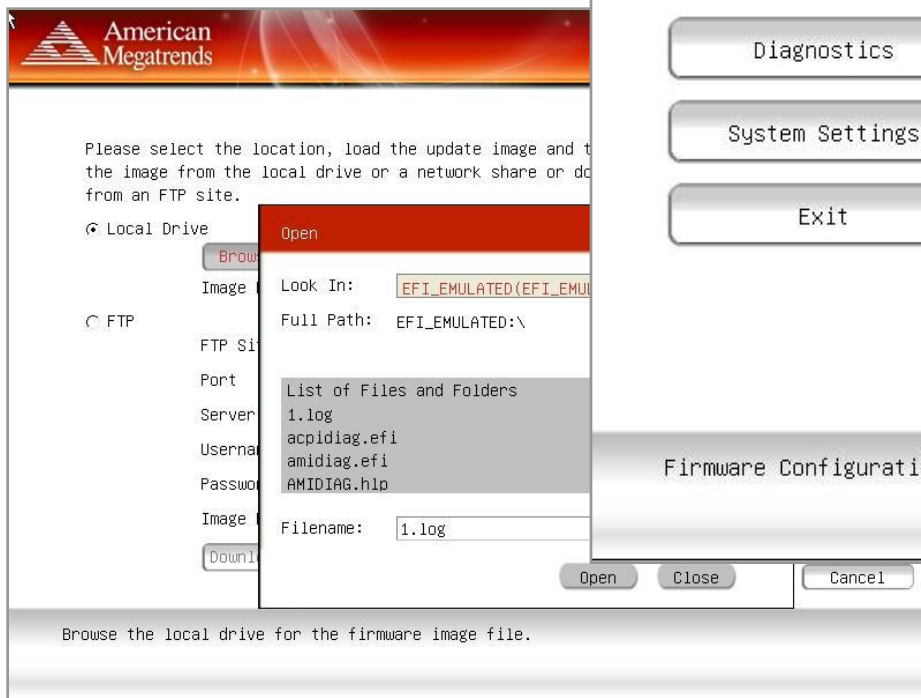
UEFI Application Development with AMI

- **The model for AMI Provisioning is to work with the OEM and create custom application suites**
 - ❖ **Faster time to market**
 - ❖ **Help from the UEFI experts at AMI**
 - ❖ **AMI can setup a model where the OEM application is sustainable over time**
- **AMI can work with your company to develop value-add UEFI applications**
 - ❖ **OEM look & feel with custom graphics**
 - ❖ **Custom applications based on OEM needs**
 - ❖ **Build level porting options based on customer & platform requirements**

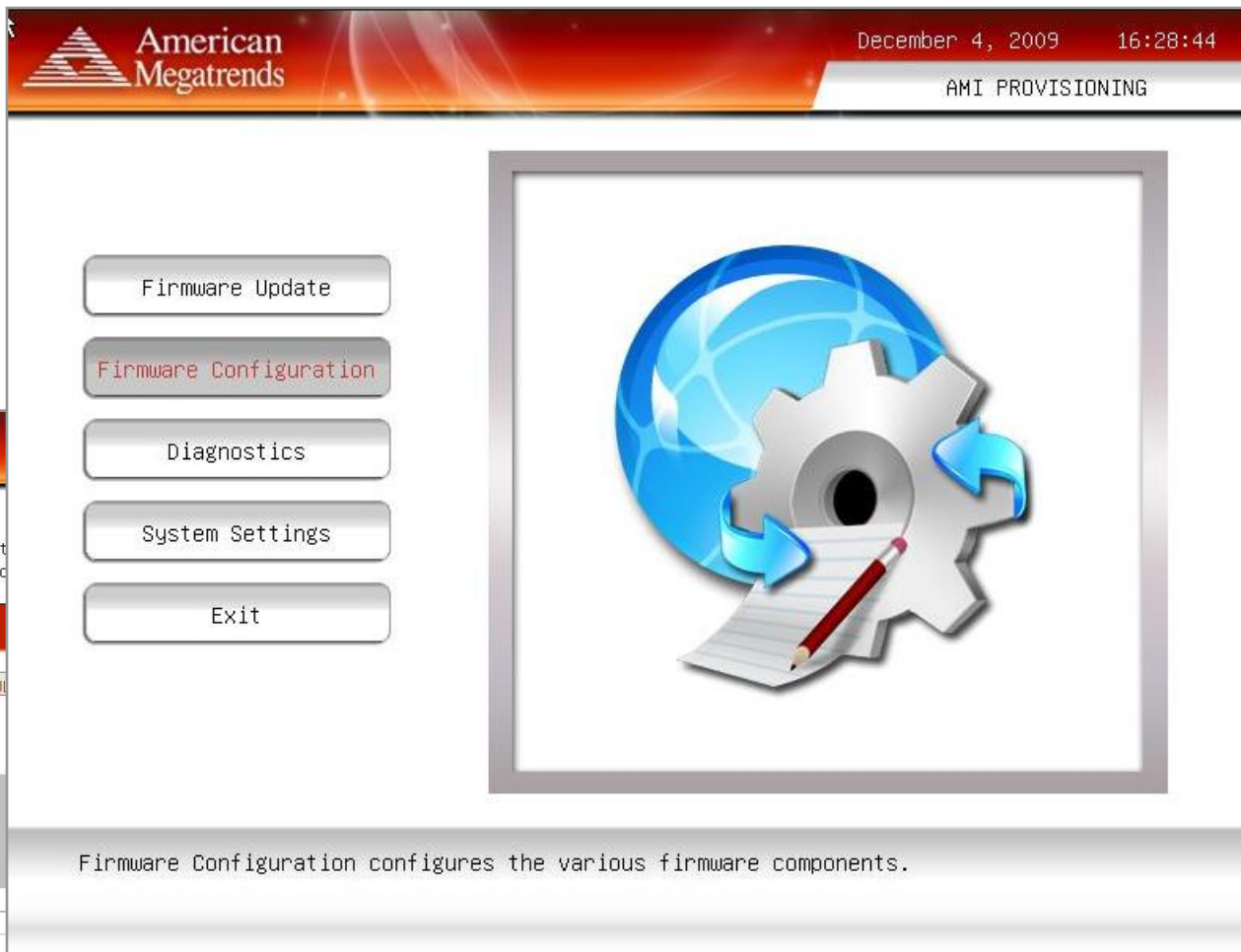


AMI Provisioning – <http://ami.com/prov>

Works “out of the box” with AMI provided layout, theme and pre-boot applications



The screenshot shows the AMI Provisioning interface with a file selection dialog box open. The dialog box is titled "Open" and shows a list of files and folders in the "EFI_EMULATED(EFI_EMU)" directory. The files listed are "1.log", "acpidiag.efi", "amidiag.efi", and "AMIDIAG.hlp". The "Filename" field is set to "1.log". The "Look In:" field is set to "EFI_EMULATED(EFI_EMU)" and the "Full Path:" is "EFI_EMULATED:\".



The screenshot shows the AMI Provisioning main menu. The header includes the American Megatrends logo, the date "December 4, 2009", and the time "16:28:44". The page title is "AMI PROVISIONING". The main menu consists of five buttons: "Firmware Update", "Firmware Configuration", "Diagnostics", "System Settings", and "Exit". A large graphic on the right side of the menu features a blue globe, a silver gear, and a red pencil. Below the menu, a text box states: "Firmware Configuration configures the various firmware components."

Fully customizable by the OEM & ODM:
Change themes, add applications, ...

American Megatrends Inc. – www.ami.com

5555 Oakbrook Parkway, Bldg. 200

Norcross, GA 30093

770-246-8600

1-800-U-BUY-AMI

